

# Biolab Medical Unit

9 Weymouth Street, London W1W 6DB, UK

Tel: (44) 020 7636-5959/5905 Fax: 020 7580-3910 E-mail: info@biolab.co.uk Internet: www.biolab.co.uk

Biolab reference: **XXXX/YYYY/G19**

Patient: **SAMPLE REPORT**

Sample date: **17/07/2019**

Age: **35**

Clinician's reference:

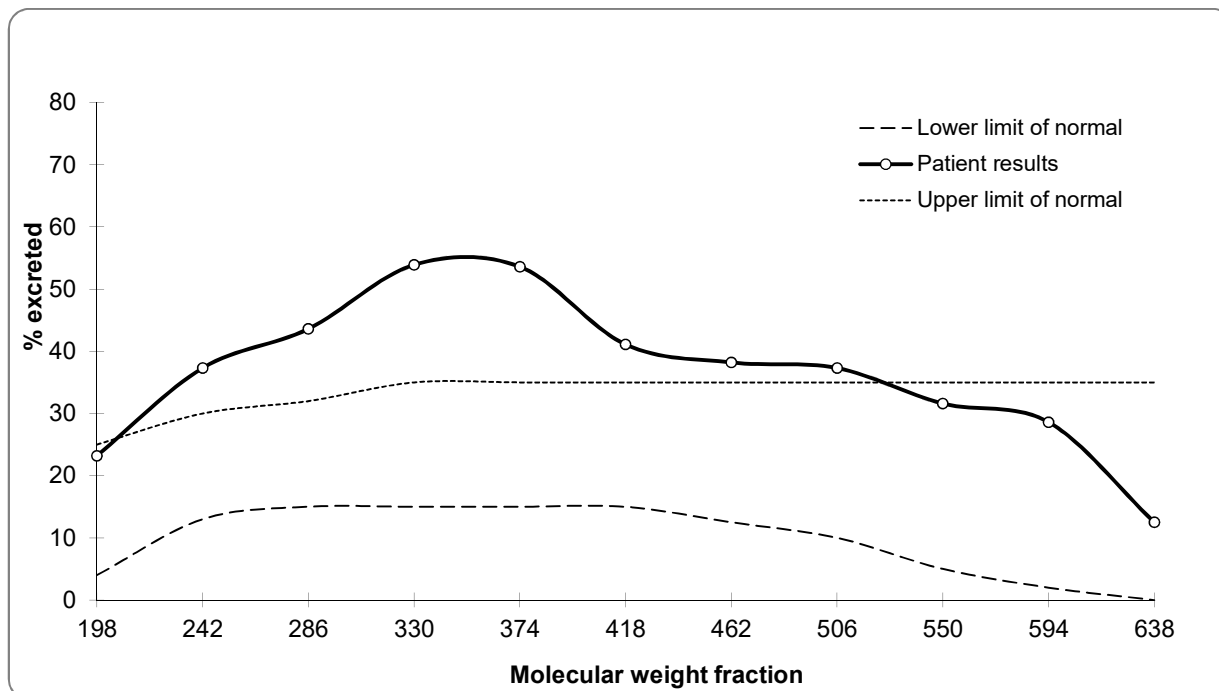
Sex: **Female**

Referred by:

Report printed: 16/07/2019

## Intestinal Permeability Profile Using polyethylene glycol (PEG 400)

Fraction	Molecular weight	Dose (mg)	Recovery in urine (6 hour collection)		Reference range
			mg	%	
1	198	25.5	5.9	<b>23.2</b>	4.0 - 25.0
2	242	86.7	32.3	<b>37.3</b>	13.0 - 30.0
3	286	185.1	80.7	<b>43.6</b>	15.0 - 32.0
4	330	363.6	196.0	<b>53.9</b>	15.0 - 35.0
5	374	503.1	269.7	<b>53.6</b>	15.0 - 35.0
6	418	542.1	222.8	<b>41.1</b>	15.0 - 35.0
7	462	479.4	183.1	<b>38.2</b>	12.5 - 35.0
8	506	360.6	134.5	<b>37.3</b>	10.0 - 35.0
9	550	246.0	77.7	<b>31.6</b>	5.0 - 35.0
10	594	138.9	39.7	<b>28.6</b>	2.0 - 35.0
11	638	68.7	8.6	<b>12.5</b>	0.0 - 35.0
TOTAL:		3000	1251.1		



### Comment:

Increase in gut permeability to PEG between molecular weights 242 and 506.